

## STANDARTLAR / STANDARDS

GEN TO BS EN  
50525-2-11  
VDE0250

## SERTİFİKALAR / CERTIFICATES

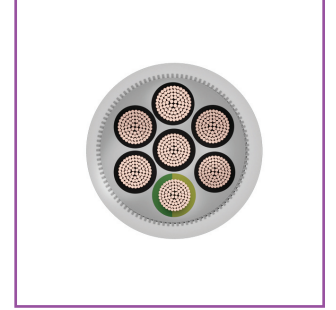
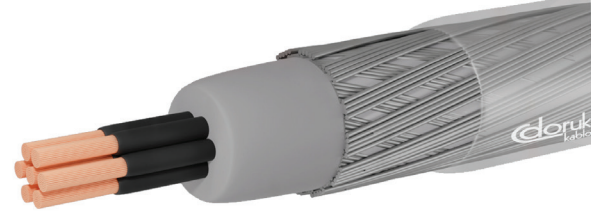


## TEKNİK ÖZELLİKLER / SPECIFICATIONS

2kV	<b>Deney Gerilimi</b> Test Voltage (AC)	<b>Pb</b>	<b>Kurşunsuz</b> Lead free
150°	<b>Maks. kısa devre sıcaklığı</b> Max. short circuit temperature	<b>-5° -15°</b>	<b>Min. çalışma sıcaklığı</b>   Min. operating temperature <b>Hareketli/Flexing</b>   <b>Sabit/Fixed</b>
	<b>Tek kablo düşey alev yayılma testi</b> Flame propagation test on single cable - EN 60332-1		
	<b>Min. bükülme yarıçapı</b> Min. bending radius	D<8 ise 4xD 8<D<12 ise 5xD D>12 ise 6xD	
60°	<b>Maks. çalışma sıcaklığı</b> Max. operating temperature		
300 / 500 V	<b>Beyan gerilimi Uo/U</b> Rated voltage Uo/U		

## YAPISI / CONSTRUCTION

<b>İletken / Conductor</b> İnce çok telli bakır Fine-stranded copper (Class 5)	<b>İzole / Insulation</b> Polivinil klorür Polyvinyl chloride	<b>Dış Kılıf / Outer Sheath</b> Polivinil klorür Polyvinyl chloride	<b>Örgü / Braiding</b> Galvanizli çelik tel Galvanized steel wire	<b>Dolgu / Filler</b> Polivinil klorür Polyvinyl chloride
---	---	---	---	---



## UYGULAMA ALANLARI / APPLICATIONS

**Kablo ölçüm, kontrol ve düzenleme kontrol ekipmanı, montaj ve üretim hatları, konveyörler ve bilgisayar birimlerinde kullanılır. Sabit tesisler veya geçici bağlantılarda esnek kullanım ve orta mekanik stres koşullarına uygundur.** Used as interconnecting cable for measuring, controlling or regulation in control equipment for assembly and production lines, conveyors and for computer units. Suitable for fixed installations or for flexible use when temporarily moved, and in conditions of medium mechanical compulsion.

## TEKNİK VERİLER / TECHNICAL DATA

Cu/PVC/PVC/GSWB/PVC

RoHS'a Uygundur (RoHS Compliant)

Nominal Kesit mm <sup>2</sup> Nominal Cross Section mm <sup>2</sup>	Yaklaşık Dış Çap mm Overall Diameter mm approximately	Yaklaşık Net Ağırlık kg/km Net Weight kg/km approximately	İletken Direnci Max. ohm/km(20°C) Conductor DC Resistance at (20°C) max. ohm/km	Akım Taşıma Kapasitesi Current Carrying Capacity in	
				Boruda (A) Conduit (A)	Havada (A) Air (A)

## YY-SY (300/500 V)

2x1	8,0	103	19,5	12	20
3x1	8,3	117	19,5	12	20
4x1	8,9	137	19,5	12	20
5x1	9,6	159	19,5	12	20
6x1	10,4	189	19,5	11	19
7x1	10,4	195	19,5	11	19
8x1	10,8	211	19,5	10,5	18,5
12x1	13,0	307	19,5	10,5	18,5
18x1	15,7	446	19,5	10	18
19x1	15,7	452	19,5	9	17
25x1	18,2	597	19,5	9	17
27x1	18,5	627	19,5	9	17
30x1	19,3	684	19,5	9	17
34x1	20,8	787	19,5	9	17
36x1	21,3	800	19,5	9	17