

SERTİFİKALAR / CERTIFICATES



TEKNİK ÖZELLİKLER / SPECIFICATIONS

2kV Deneysel Gerilimi / Test Voltage (AC) **Pb** Kurşunsuz / Lead free**150°** Maks. kısa devre sıcaklığı / Max. short circuit temperature **-5° -15°** Min. çalışma sıcaklığı | Min. operating temperature
Hareketli/Flexing | Sabit/Fixed

Tek kablo düşey alev yayılma testi / Flame propagation test on single cable - EN 60332-1

 Min. bükülme yarıçapı / Min. bending radius D<8 ise 4xD
8<D<12 ise 5xD
D>12 ise 6xD**60°** Maks. çalışma sıcaklığı / Max. operating temperature**300 / 500 V** Beyan gerilimi Uo/U / Rated voltage Uo/U

YAPISI / CONSTRUCTION

İletken / Conductor

İnce çok telli bakır / Fine-stranded copper (Class 5)

İzole / Insulation

Polivinil klorür / Polyvinyl chloride

Dış Kılıf / Outer Sheath

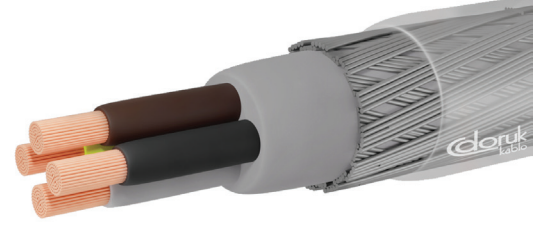
Polivinil klorür / Polyvinyl chloride

Örgü / Braiding

Galvanizli çelik tel / Galvanized steel wire

Dolgu / Filler

Polivinil klorür / Polyvinyl chloride



UYGULAMA ALANLARI / APPLICATIONS

Kablo ölçüm, kontrol ve düzenleme kontrol ekipmanı, montaj ve üretim hatları, konveyörler ve bilgisayar birimlerinde kullanılır. Sabit tesisler veya geçici bağlantılarda esnek kullanım ve orta mekanik stres koşullarına uygundur. Used as interconnecting cable for measuring, controlling or regulation in control equipment for assembly and production lines, conveyors and for computer units. Suitable for fixed installations or for flexible use when temporarily moved, and in conditions of medium mechanical compulsion.

TEKNİK VERİLER / TECHNICAL DATA

Cu/PVC/PVC/GSWB/PVC

RoHS'a Uygun (RoHS Compliant)

Nominal Kesit
mm²
Nominal Cross
Section mm²Yaklaşık Dış
Çap mm
Overall
Diameter mm
approximatelyYaklaşık Net
Ağırlık kg/km
Net Weight kg/km
approximatelyİletken Direnci Max.
ohm/km(20°C)
Conductor DC
Resistance at (20°C)
max. ohm/kmAkım Taşıma Kapasitesi
Current Carrying Capacity in
Boruda (A) / Conduit (A)
Havada (A) / Air (A)

YY-SY (300/500 V)

Nominal Kesit mm ²	Yaklaşık Dış Çap mm	Yaklaşık Net Ağırlık kg/km	İletken Direnci Max. ohm/km(20°C)	Boruda (A)	Havada (A)
2x0,50	7,1	78	39,0	8	13
3x0,50	7,4	87	39,0	8	13
4x0,50	7,9	100	39,0	8	13
5x0,50	8,4	116	39,0	8	13
6x0,50	9,0	132	39,0	7	12
7x0,50	9,0	135	39,0	7	12
12x0,50	11,8	228	39,0	6,5	11,5
18x0,50	13,4	299	39,0	6	11
19x0,50	13,7	302	39,0	6	11
25x0,50	15,7	408	39,0	5	10
27x0,50	16,0	427	39,0	5	10
30x0,50	16,5	456	39,0	5	10
34x0,50	17,8	526	39,0	5	10
36x0,50	18,1	533	39,0	5	10
2x0,75	7,8	95	26,0	10	16
3x0,75	7,9	103	26,0	10	16
4x0,75	8,5	119	26,0	10	16
5x0,75	9,1	138	26,0	10	16
6x0,75	9,7	159	26,0	9	15
7x0,75	10,5	163	26,0	9	15
8x0,75	10,7	193	26,0	8,5	14,5
12x0,75	12,8	277	26,0	8,5	14,5
18x0,75	14,8	376	26,0	8	14
19x0,75	14,8	381	26,0	8	14
25x0,75	17,4	514	26,0	7	13
27x0,75	17,7	538	26,0	7	13
30x0,75	18,5	586	26,0	7	13
34x0,75	19,7	666	26,0	7	13
36x0,75	19,8	675	26,0	7	13