

## STANDARTLAR / STANDARDS

GEN TO BS 6004:2012  
IEC 60502-1PVC ÇİFT İZOLELİ ÇOK TELLİ  
PVC DOUBLE INSULATED FLEXIBLE WIRE

6381 Y UK CODE 6381 Y

## SERTİFİKALAR / CERTIFICATES

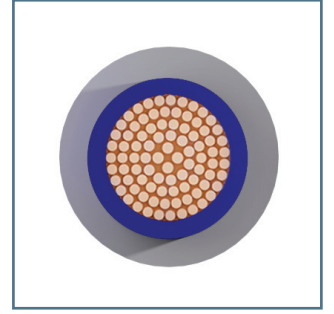
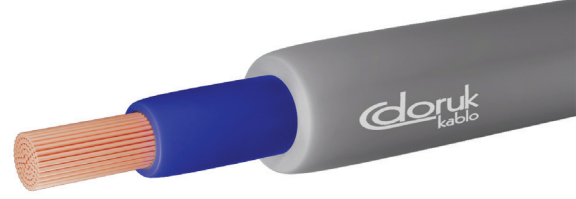


## TEKNİK ÖZELLİKLER / SPECIFICATIONS

2.5kV 3.5kV	<b>Deney Gerilimi</b> Test Voltage (AC)		
160°	<b>Maks. kısa devre sıcaklığı</b> Max. short circuit temperature		
	<b>Tek kablo düşey alev yayılma testi</b> Flame propagation test on single cable -EN 60332-1		
	<b>Min. bükülme yarıçapı</b> Min. bending radius	≤ 25mm <sup>2</sup> 8xD > 25mm <sup>2</sup> 12xD	
70°	<b>Maks. çalışma sıcaklığı</b> Max. operating temperature		
	<b>Kurşunsuz</b> Lead free	<b>300   500V</b> <b>600   1000V</b>	<b>Beyan gerilimi Uo/U</b> Rated voltage Uo/U

## YAPISI / CONSTRUCTION

<b>İletken / Conductor</b> İnce çok telli bakır Fine-stranded copper (Class 5)	<b>İzole / Insulation</b> Polivinil klorür Polyvinyl chloride	<b>Dış Kılıf / Outer Sheath</b> Polivinil klorür Polyvinyl chloride
---	---	---



## UYGULAMA ALANLARI / APPLICATIONS

Sıva altı kanal içinde ve panolarda kullanılır.  
Installation in walls, on boards and in channels or embedded in plaster.

## TEKNİK VERİLER / TECHNICAL DATA

Cu/PVC/PVC

RoHS'a Uygun (RoHS Compliant)

Nominal Kesit mm <sup>2</sup> Nominal Cross Section mm <sup>2</sup>	Yaklaşık Dış Çap mm Overall Diameter mm approximately	Yaklaşık Net Ağırlık kg/km Net Weight kg/km approximately	İletken Direnci Max. ohm/km(20°C) Conductor DC Resistance at (20°C) max. ohm/km	Akım Taşıma Kapasitesi Current Carrying Capacity in
				Havada (A) Air (A)
6381 Y				
4*	6,9	82	4,95	32
6*	7,4	104	3,30	41
10*	8,9	157	1,91	57
16*	10,0	220	1,21	76
25*	12,2	330	0,780	101
35*	13,4	431	0,554	125
50	14,9	575	0,386	151
70	16,6	764	0,272	192
95	19,5	1033	0,206	232
120	20,6	1265	0,161	269
150	23,0	1572	0,129	300
185	26,2	1931	0,106	341
240	29,0	2470	0,0801	400
300	31,8	3067	0,0641	458
400	39,2	4148	0,0486	546

\* 300/500 V ve/and 600/1000 V