

# PVC İZOLELİ, PVC DIŞ KILIFLI, KONSANTRİK YER ALTI KABLOLARI

## PVC INSULATED AND PVC SHEATHED, UNDERGROUND CABLES

### STANDARTLAR / STANDARDS

TS IEC 60502-1  
IEC 60502-1  
VDE 0276-603  
IS 1516.1

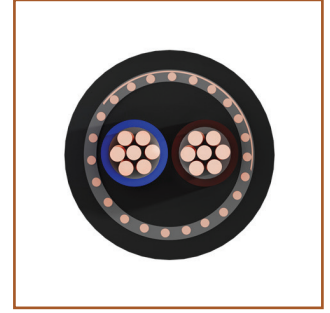
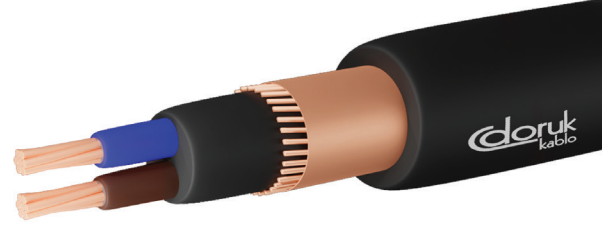
NYCY (TEİAŞ) YVCV

### SERTİFİKALAR / CERTIFICATES



### TEKNİK ÖZELLİKLER / SPECIFICATIONS

|       |   |           |  |
|-------|---|-----------|--|
| 3,5kV | <b>Deney Gerilimi</b><br>Test Voltage (AC)  | 0,6   1kV | <b>Beyan gerilimi Uo/U</b><br>Rated voltage Uo/U |
| 160°  | <b>Maks. kısa devre sıcaklığı</b><br>Max. short circuit temperature                             | Pb        | <b>Kurşunsuz</b><br>Lead free                    |
|       | <b>Tek kablo düşey alev yayılma testi</b><br>Flame propagation test on single cable -EN 60332-1 |           |  |
|       | <b>Min. bükülme yarıçapı</b><br>Min. bending radius   | 12xD      |  |
| 70°   | <b>Maks. çalışma sıcaklığı</b><br>Max. operating temperature                                    |           |  |



### YAPISI / CONSTRUCTION

|   |   |   |   |  |   |
|---|---|---|---|--|---|
| <b>İletken / Conductor</b><br>Som veya örgülü bakır<br>Solid or stranded copper<br>(Class 1 or Class 2) | <b>İzole / Insulation</b><br>Polivinil klorür<br>Polyvinyl chloride | <b>Dolgu / Filler</b><br>Polivinil klorür<br>Polyvinyl chloride | <b>Zırh / Armour</b><br>Konsantrik bakır iletken<br>Concentric copper conductor | <b>Bant / Tape</b><br>Bakır koruma bandı<br>Protective copper tape | <b>Diş Kılıf / Outer Sheath</b><br>Polivinil klorür<br>Polyvinyl chloride |
|---|---|---|---|--|---|

### UYGULAMA ALANLARI / APPLICATIONS

Enerji kablosu olarak genellikle yer altında, endüstriyel mekanlarda ve şehir şebekelerinde kullanılır.  
Used mainly in underground, industrial areas and city networks as energy cable.

### TEKNİK VERİLER / TECHNICAL DATA

Cu/PVC/PVC/CWS/CT/PVC

RoHS'a Uygundur (RoHS Compliant)

| Nominal Kesit<br>mm <sup>2</sup><br>Nominal Cross<br>Section mm <sup>2</sup> | Yaklaşık Diş<br>Çap mm<br>Overall<br>Diameter mm<br>approximately | Yaklaşık Net<br>Ağırlık kg/km<br>Net Weight kg/km<br>approximately | İletken Direnci Max.<br>ohm/km(20°C)<br>Conductor DC<br>Resistance at (20°C)<br>max. ohm/km | Akım Taşıma Kapasitesi<br>Current Carrying Capacity in |                       |
|--|---|--|---|--|-----------------------|
|  |   |  |   | Toprakta (A)<br>Ground (A)                             | Havada (A)<br>Air (A) |

### NYCY (0,6/1 kV)

|           |       |       |        |     |     |
|-----------|-------|-------|--------|-----|-----|
| 2x1,5/9   | 12,60 | 274   | 12,10  | 32  | 20  |
| 2x2,5/9   | 13,10 | 306   | 7,41   | 42  | 20  |
| 2x4/9     | 14,80 | 385   | 4,61   | 54  | 37  |
| 2x6/9     | 16,34 | 455   | 3,08   | 68  | 48  |
| 2x10/10   | 15,34 | 490   | 1,83   | 90  | 66  |
| 2x16/16   | 20,94 | 856   | 1,15   | 116 | 89  |
| 2x25/16   | 24,56 | 1201  | 0,727  | 150 | 118 |
| 2x35/16   | 26,66 | 1470  | 0,524  | 181 | 145 |
| 2x50/25   | 30,16 | 1979  | 0,387  | 215 | 176 |
| 2x70/35   | 34,80 | 2708  | 0,268  | 264 | 224 |
| 2x95/50   | 39,20 | 3517  | 0,193  | 317 | 271 |
| 2x120/70  | 43,78 | 4489  | 0,153  | 360 | 314 |
| 2x150/70  | 47,58 | 5303  | 0,124  | 406 | 361 |
| 2x185/95  | 52,10 | 6532  | 0,0991 | 458 | 412 |
| 2x240/120 | 59,10 | 8412  | 0,0754 | 537 | 484 |
| 2x300/150 | 65,50 | 10534 | 0,0601 | 600 | 560 |