

STANDARTLAR / STANDARDS

BS 5467

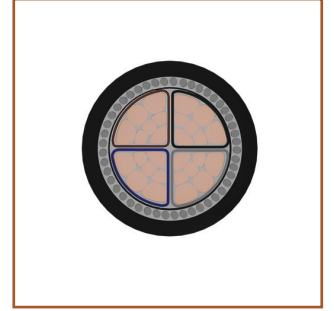
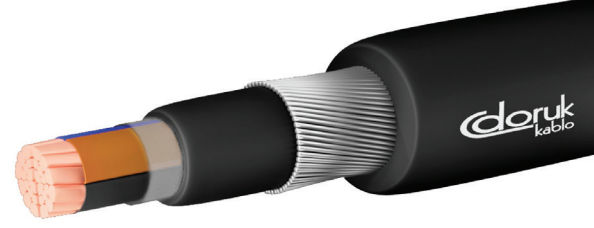
**XLPE İZOLELİ, ÇELİK TEL ZIRHLI,
ÇOK DAMARLI ENERJİ KABLOLARI**
XLPE INSULATED, STEEL WIRE ARMoured,
MULTI-CORE POWER CABLES**ARMoured POWER CABLES BS 5467
UK CODE 694-X**

SERTİFİKALAR / CERTIFICATES

CE BASEC

TEKNİK ÖZELLİKLER / SPECIFICATIONS

3.5kV	Deney Gerilimi Test Voltage (AC)
250°	Maks. kısa devre sıcaklığı Max. short circuit temperature
	Tek kablo düşey alev yayılma testi Flame propagation test on single cable -EN 60332-1
	Min. bükülme yarıçapı Min. bending radius
90°	Maks. çalışma sıcaklığı Max. operating temperature
	Kurşunsuz Lead free
0,6 1kV	Beyan gerilimi Uo/U Rated voltage Uo/U



YAPISI / CONSTRUCTION

İletken / Conductor Sektör Şekilli örgülü bakır Sector shaped stranded copper (Class 2)	İzole / Insulation Çapraz bağlı polietilen Cross linked polyethylene	Dolgu / Filler Polivinil klorür Polyvinyl chloride	Polyester Tutucu Bant Polyester Tape Tutucu yalıtkan polyester bant Conservative insulator polyester tape	Zırh / Armour Galvanizli yuvarlak çelik tel Galvanized round steel wire	Dış Kılıf / Outer Sheath Polivinil klorür Polyvinyl chloride
---	---	---	--	--	---

UYGULAMA ALANLARI / APPLICATIONS

Kapalı veya açık alanlarda direk toprak altı uygulamalarında kullanılır.
Direct burial free-draining soil conditions for fixed indoor and outdoor installations.

TEKNİK VERİLER / TECHNICAL DATA

Cu/XLPE/PVC/SWA/PVC

RoHS'a Uygun (RoHS Compliant)

Nominal Kesit mm ² Nominal Cross Section mm ²	Yaklaşık Dış Çap mm Overall Diameter mm approximately	Yaklaşık Net Ağırlık kg/km Net Weight kg/km approximately	İletken Direnci Max. ohm/km(20°C) Conductor DC Resistance at (20°C) max. ohm/km	Akım Taşıma Kapasitesi Current Carrying Capacity in	
				Toprakta (A) Ground (A)	Havada (A) Air (A)

BS 5467 (0,6/1 kV)

4x35	28,1	2.180	0,524	115	162
4x50	31,0	2.770	0,387	135	197
4x70	36,9	3.980	0,268	167	251
4x95	40,5	5.080	0,193	197	304
4x120	47,3	6.610	0,153	223	353
4x150	49,6	7.940	0,124	251	406
4x185	54,0	9.570	0,0991	281	463
4x240	59,9	12.100	0,0754	324	546
4x300	64,7	14.800	0,0601	365	628